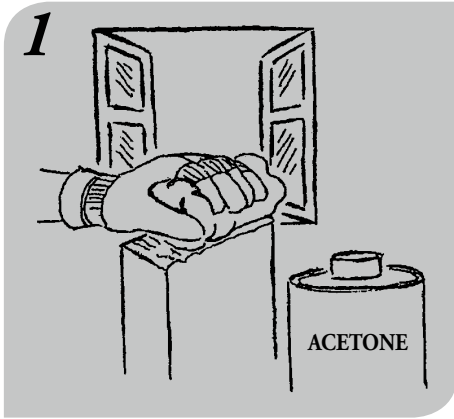
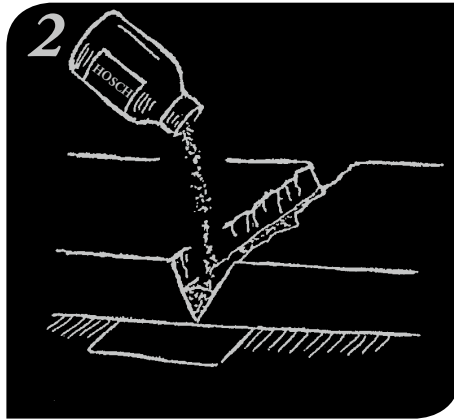


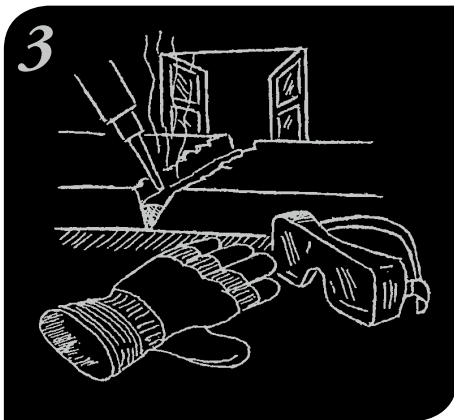
Instruction for Application



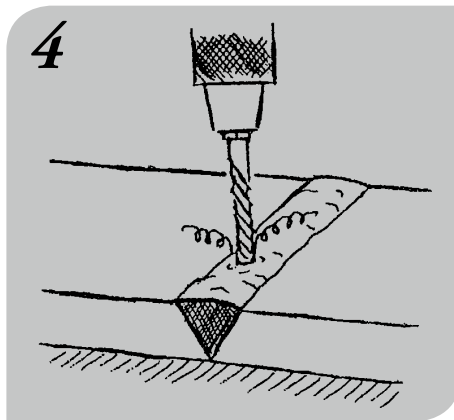
The faces of the parts to be connected must be cleaned thoroughly from dirt, grease, oil and adhesive agent residuals. To be recommended for the cleaning: acetone. During these workings the room must be ventilated well.



In case of extreme fractures or of lacking material as well as for the strengthening of materials the gaps and holes are filled up with HOSCH Granulate – underlay a sheet of paper to avoid trickling. Take care that the height of filling up does not exceed 2-3 mm. In case of deeper gaps or holes the filling up must be done in layers.



There after the granulate is soaked thoroughly with HOSCH Industrial Glue. Thereby a chemical reaction occurs. (ATTENTION! Development of heat and forming of vapours!) Wear safety goggles and gloves! Do not inhale the vapours, ventilate well!

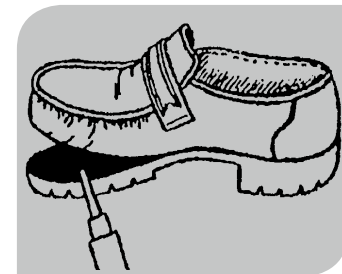
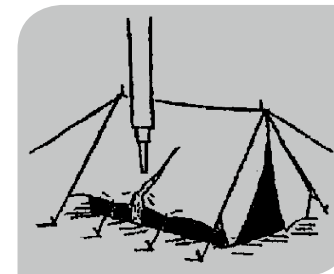
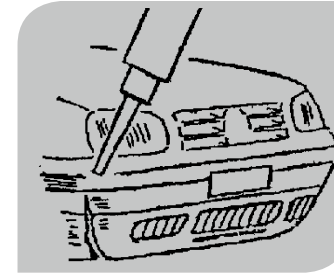
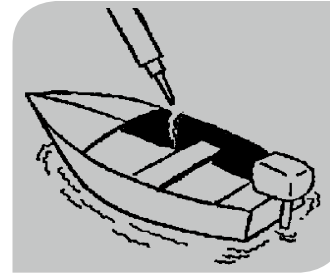


After appr. 30 min. the seam will be hardened and can be machined mechanically. It is possible to grind, to spatule or to drill. To adapt the seam formed to the appearance of the original material apply laquer.



Industrial Glue

It sticks, sticks and sticks ...! The connection, which never breaks!



www.hosch-kleber.de

- Easy to use!
- Economical in every case!
- Ready for use!
- No mixing for combined material!
- Just one adhesive for all materials!

It sticks fast, reliable and uncomplicated all kinds of aluminium, steel, wood, rubber, porcelain, leather, glass and any other common kind of plastics.

Vertrieb durch ETARI GmbH • Weidachstr. 5 • 70597 Stuttgart

Tel.: +49 (0) 711-71 94 06 98 • Fax: +49 (0) 711-722 30 222 • E-Mail: sales@etari.de • www.etari.de

HOSCH® *Industrial Glue*

It sticks, sticks and sticks ...! A connection, which never breaks!

Product description

HOSCH Industrial Glue is a high quality product of modern chemistry. It represents a sensational development in the field of glue technology. It is based on alphacyanacrylate ester. The quality of the glue depends on the degree of distillation.

HOSCH Industrial Glue is the result of many years of professional processing.

This explains its almost unlimited range of glue possibilities. HOSCH Industrial Glue also meets the highest demands in terms of elasticity, resistance to heat and cold and to chemicals. It is totally unaffected by water.

Environment friendly

Once it has set, HOSCH Industrial Glue is completely non toxic.

Application

HOSCH Industrial Glue can be used in industry (model building, sports goods, automobiles plastics, photo and optical

goods, dental technology) as well in the household.

HOSCH Industrial Glue sticks fast, reliable and uncomplicated all kinds of aluminium, steel, wood, rubber, porcelain, leather, glass and any other common kind of plastics. It is not suitable for cloth, paper, teflon, polyethylene and polypropylene.

Instruction for use

Before sticking, glass should be cleaned with white spirit, pure petroleum or acetone and allowed to dry. For strongly absorbent surfaces, somewhat more glue is needed. We recommend that you carry out some preliminary tests with HOSCH Industrial Glue.

Surfaces to be joined must be free of rust, grease and dust. In some cases (e.g. leather), roughen the surface with fine sandpaper. Remove traces of old glue the better the joint. Allow the glued items to stand for a few minutes.

Different materials dry at different rates. Best results are obtained at room temperature.

After 7-8 hours, any material will be firmly set.

Opening the pipette or bottle

Do not cut the pipette for pierce with a needle. Do not point the pipette towards the face while doing so.

Cut open the thinnest side of the bottle with scissors.

Important

Light and heat are to be avoided at all costs. Keep bottles and pipettes in upright position.

HOSCH Industrial Glue is only available from authorized dealers, from trade fairs or directly from us. If you have any questions, please consult us. We will be glad to help you at any time.

Cyanacrylates: Danger!

Do not swallow! Do not inhale vapors! It will stick skin or eyelids tight within seconds.

Keep out of the reach of children! Clean off hands with soap and water or hand-cleaner. Rinse eyes with special eyewash. Consult eye specialist!

HOSCH® *Granulate*

Safety Data Sheet

Company

- Firma HOSCH – Vertrieb von Industrieklebstoffen
Postfach 10 01 31, 16284 Schwedt/Oder
Mobil: 00 49-172-3 11 68 83, Fax: 00 49-33 32-52 44 44
E-Mail: hosch-sticks@freenet.de

Possible Dangers

- Characterizing of danger: not applicable; according to the GefStoff V (Regulation concerning dangerous substances) no designation is required.
- Must not come into hands of children; danger of swallowing!**
- Do not inhale the vapours developing during the reaction which cyanacrylate! Wear safety goggles! The working rooms are to be ventilated well! Caution! During the reaction heat is generated! Wear safety gloves!
- In case of eye contact rinse thoroughly with water immediately and consult a physician!

Technical information

Condition/Appearance:	- white globular particles	
Smell:	- does not develop particular odour	
Chemical basis, acc. to DIN 8201	- SiO ₂ 65,0%	- CaO 8,0%
	- Al ₂ O ₃ 0,5-2,0%	- Na ₂ O 14,0%
	- Fe ₂ O ₃ 0,15%	- others 2,0%
	- MgO 2,5%	
Storage stability at room temperature:	- unlimited in case of dry storage	
Size:	- 100 - 200µ	
Hardness acc. to Mohs:	- appr. 6-7	
Hardness acc. to Rockwell:	- appr. 46	
Hardness acc. to Vickers:	- appr. 645	